

CONCENTRIC

Your World, Secured

EVENT THREAT ASSESSMENT

BANGKOK, THAILAND

JULY 23, 2025

PREPARED FOR:

GLOBAL SOF FOUNDATION



Destination: Bangkok, Thailand

Moderate ▾

DATE OF TRAVEL: August 19 to 21, 2025

The overall risk to the Indo-Pacific Irregular Warfare Symposium event in Bangkok, Thailand from August 19 to 21, 2025 is MODERATE due to ongoing political uncertainty, cyber activity, and terrorism related concerns. Although we identified no specific threats to the Athenee Hotel, recent nearby protests warrant continued monitoring. Crime in Bangkok largely consists of petty theft and scams, with rare incidents such as virtual kidnappings and violent abductions impacting travelers. For more information on Concentric's risk methodology and ratings, please see the [Appendix](#).

REGIONAL DYNAMICS

SUMMARY: The Indo-Pacific region continues to be a major geopolitical flashpoint as U.S.-China competition intensifies, shaping the strategic landscape through economic tensions, military buildup, and competition for influence. Southeast Asia remains an important flashpoint in this rivalry, with ASEAN states navigating a delicate balance between security partnerships with Washington and economic interdependence with Beijing.

- Furthermore, [tensions](#) in the South China Sea persist, as Chinese maritime [militias](#) challenge the sovereignty of the Philippines, while Taiwan continues to remain a potential crisis for a military escalation. At the same time, countries in the region concerned about China's growing influence continue to deepen defense cooperation under frameworks such as the Quadrilateral Security Dialogue (QUAD) and the Australia, United Kingdom and United States trilateral partnership (AUKUS).

Thailand is facing a period of domestic uncertainty and external tension as Prime Minister Paetongtarn Shinawatra's political authority [collapsed](#) following the leak of a phone call with former Cambodian Prime Minister Hun Sen. In the leaked call she allegedly criticized her own military amid an escalating border dispute between the two countries. As a result, protests occurred, coalition parties withdrew support, and the Constitutional Court suspended Shinawatra in early July, pending an ethics inquiry.

- On the foreign policy front, the Thai-Cambodian border clash [led](#) to the death of one Cambodian soldier on May 28, 2025, near the disputed Chong Bok (Emerald Triangle) in which Thai and Cambodian soldiers exchanged fire for approximately ten minutes. This prompted both countries to reinforce troops along the undemarcated 510 mile border. Cambodian officials [raised](#) the dispute with the International Court of Justice, while China offered to mediate, drawing Bangkok further into a regional power tug-of-war.
- More recently, on July 16, 2025, three Thai soldiers were [injured](#) after stepping on newly laid landmines along the same disputed frontier, prompting Thailand to recall its ambassador and restrict border crossings.

Looking ahead, we assess if the political deadlock remains unresolved, there is a growing risk of the military stepping in, either overtly through a formal coup or covertly by leveraging its influence to install a more favorable interim leadership. Such a development would likely damage Thailand's democratic credibility and risk triggering domestic unrest.



We recommend travelers closely monitor the ongoing political situation and maintain flexibility in planning as protests or shifts in escalation could occur.

LOCATIONAL RISKS

ACTIVISM AND PROTESTS

Moderate ▾

The overall threat from activism and protests during the event in Bangkok is MODERATE. We did not identify any planned protests specifically targeting the Irregular Warfare Symposium or its venue.

The event is scheduled to take place at the Athenee Hotel, Bangkok, located on Witthayu Road in the city's central business district. This venue is situated near key diplomatic missions, including the U.S. Embassy, and major commercial centers. While the hotel is not a common site for political demonstrations, its proximity to government buildings, embassies, and key intersections increases the potential for indirect exposure to protest activity occurring elsewhere in the area.

- Wireless Road and adjacent areas such as Lumpini Park and Ratchadamri have historically been used as gathering points for both political protests and civil society demonstrations. Given the current political climate in Bangkok, localized disruptions, such as an increased police presence, security cordons, or traffic diversions, are possible, particularly if protests escalate near government or foreign diplomatic sites.

Recent nearby protests include:

- June 28, 2025: Up to 20,000 protestors, led by nationalist group *United Force of the Land*, gathered at Victory Monument (approximately 1.2 miles from the Athenee Hotel) [demanding](#) Shinawatra's resignation over the phone call with Hun Sen.
- June 10, 2025: Demonstrators organized by former PAD leaders [called](#) for a stronger government response to the Thailand-Cambodia border clash at (approximately 1 mile from the Athenee Hotel).
- June 6, 2025: Approximately 200 activists [protested](#) at the Cambodian Embassy on Witthayu Road (approximately 0.2 miles from the Athenee Hotel). They demanded recognition of Thai sovereignty amid the border dispute.



We urge all travelers to avoid protest activity as organizers often block modes of transportation, causing traffic disruptions and an enhanced police presence in impacted areas.



We recommend the GSOF monitor protest activity in the vicinity of the Athenee Hotel before and during the event, given the ongoing political tensions and potential for localized disruption.

CRIMINAL THREAT

Moderate ▾

The overall threat from crime in Bangkok is MODERATE. Violent crime is relatively uncommon, being largely reserved for internal criminal rivalries in peripheral areas of the city; however, there are elevated levels of petty crimes targeting foreign visitors, particularly in central and tourist-heavy areas.

- Tourist areas, including most prominently Khao San Road, and transport hubs, such as bus and train stations, are the most dangerous locations for pickpocket activity. Scams are also particularly prevalent in these areas, including credit card fraud, ATM fraud, and fake taxis.
- Vehicle theft is the most common crime in Thailand and also occurs across Bangkok, most often at night and, in rarer confrontational cases, at stop lights.

Violent crime is mostly seen in Bangkok's entertainment districts on the city's periphery, such as Bang Khae, Bang Bon, Bang Khun Thian, Bueng Khum, and Chatuchak. Most criminals do not target foreign nationals with violent crime. Organized criminal groups generally seek to avoid government attention by staying away from tourist and business

targets; most of their activity involves drugs and human trafficking, and any violent crime tends to be isolated to disputes within or between separate gangs in peripheral areas. However, high-impact crime incidents can affect business travelers, as has been highlighted in the recent trend of Chinese business kidnappings:

- June 5, 2025: In a virtual kidnapping case, a Chinese businesswoman was [encouraged](#) by scammers pretending to be the authorities to isolate herself in Bang Na district. The criminals demanded a 25 million baht ransom from her family. She was found safe before this was paid.
- April 16, 2023: A Chinese businessman was [kidnapped](#) by Chinese criminals from his apartment in the Tao Poon area. A 1.6 million baht ransom was demanded for his release. He was rescued by police before this was paid.
- April 14, 2023: A Chinese businessman was [kidnapped](#) from his home in Sathon, one mile from the Athenee Hotel. A 3.5 million baht ransom was demanded and paid for his release.

Criminals have also targeted foreigners of other nationalities for kidnappings:

- April 16, 2025: Three Indian nationals were [kidnapped](#) from a house in the Muang district by a gang of Indian-Pakistani criminals. Ransoms of 900,000 baht were demanded from each of the victims' families for their release. They were rescued by police before the ransoms were paid.
- April 19, 2024: A French woman was [arrested](#) for plotting to kidnap the daughter of a prominent Australian businesswoman at a hotel in the Silom area of Bang Rak. The plan allegedly involved a 200 million baht ransom demand.

Similarly to kidnappings, other high-impact crimes such as armed robberies, sexual assaults, and homicides are also relatively uncommon in Bangkok. The city's homicide rate was 1.2 per 100,000 inhabitants in 2022, almost identical to London's rate for that year and well below those of New York City (6.0) and Los Angeles (10.0). High-impact crimes tend to take place in the city's outskirts; however, isolated incidents have also been recorded over recent years within the vicinity of the Athenee Hotel:

- May 24, 2025: A man was [stabbed](#) to death on the Rama IV Road (roughly 1 mile from the Athenee Hotel). The victim was a motorcycle taxi driver who was seemingly assaulted during a dispute with a colleague.
- April 11, 2025: A student was [stabbed](#) to death at the north end of the Ratchadamri Road (approximately half a mile from the Athenee Hotel). He was killed by teenage thieves while riding his motorcycle, who also stole valuables.
- June 25, 2024: A German tourist visiting the Sukhumvit area was [drugged](#) and robbed near an entertainment venue. The two female assailants had mixed Alprazolam, a date rape drug, into the victim's drink before following him to his apartment.
- May 10, 2024: Pedestrians were [threatened](#) by an attempted armed robbery at the Sukhumvit Road, in Watthana, the district bordering the Athenee Hotel to its northeast. The Burmese perpetrator escaped the scene by diving into a nearby canal.

There have also been sporadic incidents in the vicinity of the Athenee Hotel involving large-scale organized criminal violence that threatened to cause collateral harm to civilians:

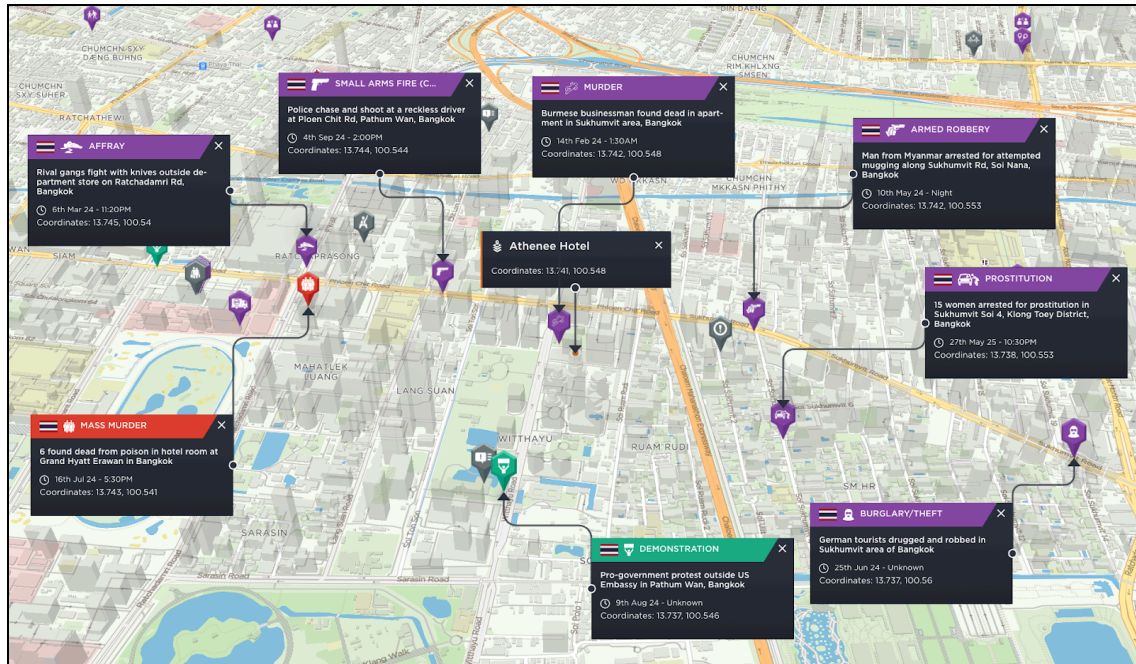
- July 16, 2024: Six Vietnamese nationals were [killed](#) by poisoning at the Grand Hyatt Erawan hotel, 870 yards to the west of the Athenee Hotel. Traces of cyanide were found in a teapot used by the victims, all believed to be involved in shared multi-million baht investments in Japanese hospital construction.
- March 6, 2024: Rival illegal taxi drivers [clashed](#) over customer access outside a department store on Ratchadamri Road, 980 yards to the west of the Athenee hotel. Gang members engaged in a brawl involving knives and leaving at least one participant with stab wounds.

The Athenee Hotel and its surroundings will likely continue to see occasional incidents involving organized criminal violence, though these will remain largely isolated cases. Mugging and homicide rates remain far lower across Bangkok than other major international cities, with policing services usually responding promptly to emergency calls.



Attendees can mitigate potential risks by maintaining situational awareness, keeping close possession of their property, traveling in groups, and avoiding unfamiliar or poorly lit areas.

CRIME INCIDENTS NEAR THE ATHENEE HOTEL, BANGKOK



The graphic depicts a selection of crimes and security alerts recorded within the vicinity of the Athenee Hotel between July 18, 2024 and July 18, 2025, including several of the incidents detailed above.

TERRORISM & DOMESTIC VIOLENT EXTREMISTS

Moderate ▾

The overall threat from terrorism and domestic violent extremism (DVEs) to the upcoming event in Bangkok is **MODERATE**. While we identified no threats directed to the venue, separatist insurgents operating in the southern provinces, particularly in Pattani, Yala, and Narathiwat, have carried out bombings, arson attacks, and targeted killings. These groups rarely operate in Bangkok, but a risk of symbolic or opportunistic attacks cannot be fully ruled out.

Bangkok has previously served as a transit for actors affiliated with terrorist groups, though activity has been limited in recent years. However, earlier this year, Thailand covertly deported 40 Uyghur men, who had been held in immigration detention in Bangkok for over a decade, to China's Xinjiang region. Political instability, high-profile diplomatic presence, and possible elections may elevate the threat environment in the months ahead.

Recent terror related incidents include:

- January, 2025: Lim Kimya, a former Cambodian opposition lawmaker, was [shot](#) dead by a suspected hitman in Bangkok's old quarter shortly after arrival in Thailand.
- February, 2025: The U.S. and Japanese embassies [issued](#) alerts warning of an elevated terrorism risk in Thailand after the deportation of 40 Uyghurs to China fearing a repeat of the 2015 bombing at the Erawan Shrine in downtown Bangkok.

Broader extremist activity and regional threats include:

- June, 2025: Internal Security Operations Command Region 4 [arrested](#) five suspects linked to the Barisan Revolusi Nasional (BRN) separatist group in a planned coordinated bombing campaign targeting tourist hubs, including

Phuket International Airport and several beach areas. Authorities confirmed the suspects prepared 15 explosive devices, but intended to use them for disruption rather than mass casualties.



Concentric recommends maintaining close monitoring of the security dynamics in the lead-up to and throughout the event. Given the fluid risk environment, it is advisable to implement real-time monitoring in order to notify staff and attendees of potential threats, disruptions, or changes in the situation near the venue.



In addition, attendees should be encouraged to stay informed by following credible local news sources and government advisories, including updates from the Thai authorities and their respective embassies. It is also prudent to minimize exposure to large crowds, demonstrations, or public gatherings.

FOREIGN INTELLIGENCE AND CYBER SECURITY

Moderate ▾

The risk of cyber actors and foreign governments targeting the upcoming book event is MODERATE because of ongoing trends in foreign intelligence and cybercriminal activity. Current geopolitical tensions between Thailand and Cambodia have raised the risk of cyber attacks, particularly those targeting institutions and events related to military affairs. Alongside those risks, cybercriminals have shown themselves to be capable of conducting sophisticated scams and massive data breaches against public and private infrastructure in Thailand.

U.S. government intelligence agencies assess there were 20 million internet-borne cyber threats hosted on Thai computers in 2020, and that cyberattacks have more than doubled since the beginning of the COVID-19 pandemic. Threat actors are increasingly employing sophisticated cybercrimes for intelligence operations. Attendees should exercise caution with emails discussing the event, especially those from unknown sources. Criminals may use spear phishing attacks to target specific groups, attempting to gather information on the event, its attendees, or to infiltrate networks. Hacktivists or ideologically motivated cyber threat actors might target attendees to expose or embarrass individuals or to build their reputations. Attendees should use discretion in disclosing information, even seemingly innocuous information, to unknown or inquisitive individuals.

Recent relevant incidents include:

- June 10, 2025: The Thai government [accused](#) a Cambodian hacker group known as “bl4ck_cyb3r” with carrying out cyberattacks against Thai public and private infrastructure. The group in question issued threats to Thai authorities suggesting an attack was imminent.
- June 7, 2025: The Thai government [accused](#) the Cambodian government of contracting North Korean hacker groups to target public and private infrastructure. The Cambodian government issued a counter-claim that Thailand supported a Thai hacker group known as “Blackeye Thai” in their attacks against Cambodian interests.
- August 23, 2021: A 200 GB database owned by Bangkok Airways was [infiltrated](#) and leaked onto the internet by unknown actors. Personal information, including details of past and booked trips, was made available.

Alongside these large-scale attacks, smaller cyber-based risks also remain a pervasive threat in Thailand. Online scams are commonplace, often taking the form of dating app or banking app scams, as well as emails from individuals pretending to be U.S. citizens asking for help. Meanwhile, government surveillance over internet activity and device data is also common. The Thai government monitors public and private online services for signs of criminal activity, including messages violating the *lese majeste* laws – any individual found with anti-monarchist posts on their device could be prosecuted and punished with lengthy jail sentences. Select electronic devices, including certain cameras, satellite phones, drones, and GPS systems may be subject to enhanced scrutiny upon entry into Thailand.

Concentric identified no incidents at the Athenee Hotel to suggest the venue is being targeted by foreign surveillance. Nonetheless, threat actors with direct access to the venue may use more traditional intelligence collection techniques, such as elicitation of information from attendees; photography of the venue, attendees, or information; and electronic surveillance including listening devices, hacking into electronic devices, or obtaining information from trash bins and dumpsters.

Concentric also identified no references to physical or cyber threats to the Athenee Hotel or to the Irregular Warfare Symposium event on social media, local press, or deep and dark web sites.



Attendees should be mindful of protecting electronic devices or documents containing sensitive business data.



Attendees should also be wary of emails pertaining to or asking about the event that are not from a known source. Spear phishing attacks, which are used to target specific groups, may be used by criminals to elicit information regarding the event, the attendees, or to gain access to networks.



Concentric advises attendees to refrain from connecting to public wi-fi networks and instead to use a Virtual Private Network (VPN).

OTHER KEY ISSUES

WEATHER AND NATURAL HAZARDS

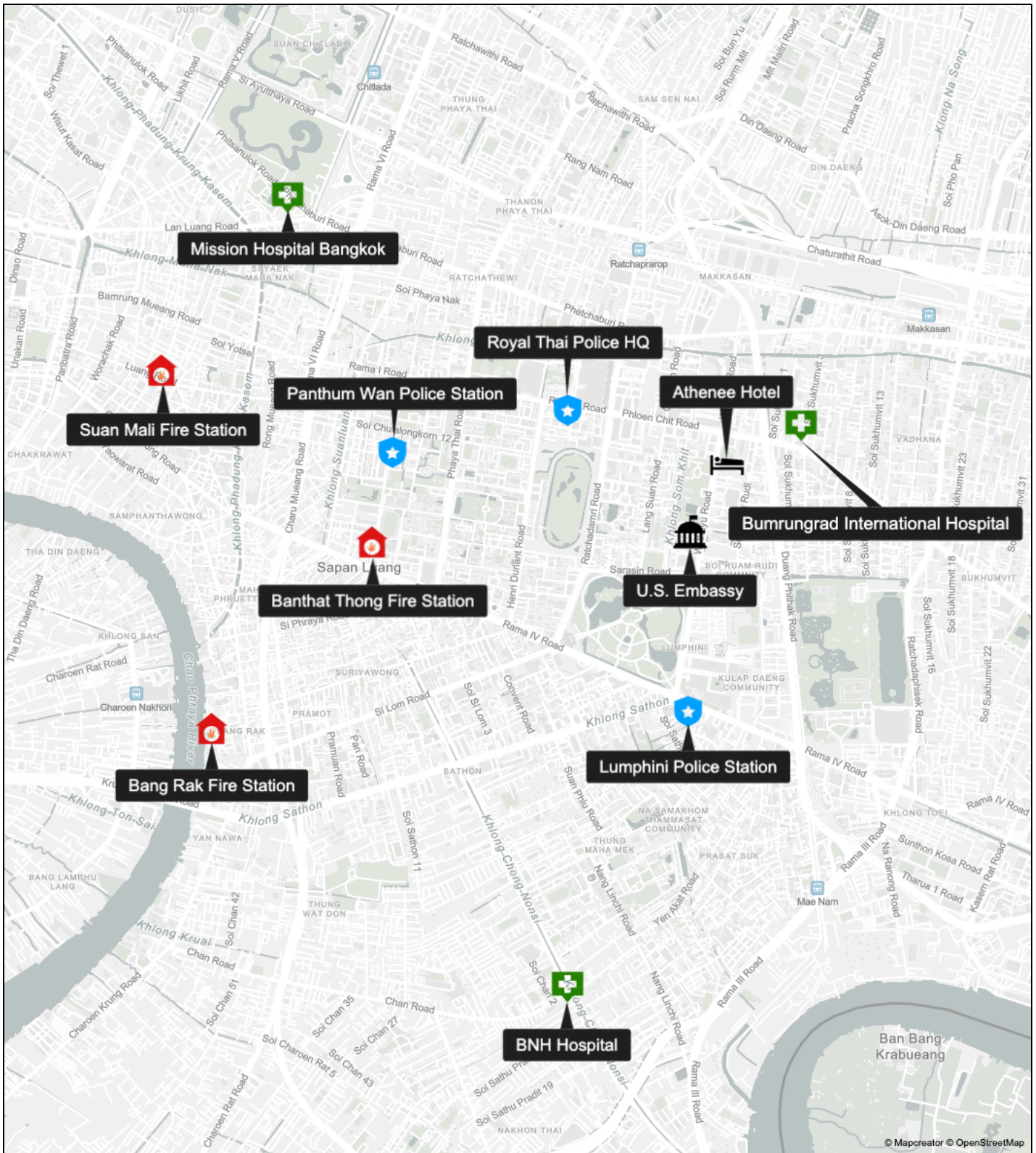
Moderate ▾

The risks posed by weather and natural hazards are MODERATE in Bangkok. Regular tectonic activity and seasonal adverse weather conditions pose the most substantial threats, though these are usually mitigated effectively by safety infrastructure.

- On March 28, 2025, a 7.8 earthquake struck the Sagaing region of Myanmar, also affecting large parts of Thailand, including Bangkok where 103 people were killed. Most of these fatalities were caused by the collapse of an unfinished skyscraper in the Chatuchak district. Bangkok's other high-rise buildings survived, though authorities reported minor damage, [including](#) to the Athenee Hotel.
- On February 15, 2024, Bangkok's authorities [instructed](#) citizens to work from home due to high pollution levels across the city. Quantities of the PM2.5 particle pollutant were detected at 15 times the level deemed healthy by the World Health Organization. This order was [repeated](#) for school children on January 24, 2025, also due to high PM2.5 quantities. Seasonal air pollution peaks in the late winter, though adverse conditions can also be seen throughout other times of the year.

Bangkok's monsoon season [runs](#) from July through to October, bringing heavy rains that can cause flash flooding. This is most dangerous in Thailand's rural areas, though it can also have negative effects on transport infrastructure in cities, including Bangkok.

APPENDIX A: FIRST RESPONDER LOCATIONS



This map highlights nearby responder locations in proximity to the hotel: green icons indicate hospitals, blue icons depict police stations, and red icons depict fire stations.

APPENDIX B: CONTACT INFORMATION

HOSPITAL INFORMATION

- [Bumrungrad International Hospital](#), 33 Soi Sukhumvit 3, Khlong Toei Nuea, Watthana, Bangkok 10110, +6620668888.
- [Mission Hospital Bangkok](#), 430 Phitsanulok Rd, Si Yaek Maha Nak, Dusit District, Bangkok 10300, +6622821100.
- [BNH Hospital](#), 9/1 Convent Rd, Si Lom, Bang Rak, Bangkok 10500, +6620220700.

POLICE STATION INFORMATION

- [Royal Thai Police Headquarters](#), PGVP+JWQ, Rama I Rd, Pathum Wan, Bangkok 10330, +6622098610.
- Lumphini Police Station, PGJW+M7Q, Witthayu Rd, Lumphini, Pathum Wan, Bangkok 10330, +66811720239.
- Panthum Wan Police Station, 99 ซอย จุฬาร 14 Wang Mai, Pathum Wan, Bangkok 10330, +6622152993.

FIRE PRECINCT INFORMATION

- Banthat Thong Fire Station, 278/1 Soi Chulalongkorn 9, Wang Mai, Pathum Wan, Bangkok 10330, +6622141043.
- Bang Rak Fire Station, 612 Si Phraya Rd, Khwaeng Si Phraya, Khet Bang Rak, Krung Thep Maha Nakhon 10500, +66807219194.
- Suan Mali Fire Station, 78 Yukol 2 Rd, Wat Thep Sirin, Pom Prap Sattru Phai, Bangkok 10100, +6622236999.

EMBASSY INFORMATION

- [U.S. Embassy](#), 95 Witthayu Rd, Lumphini, Pathum Wan, Bangkok 10330, +6622054000.

APPENDIX C: RISK METHODOLOGY

Concentric uses a five-point risk rating system to evaluate potential threats to travelers. Below is our risk rating and methodology and five risk categories:

RISK RATING	VALUE	RECOMMENDATION
Extreme Hostile or unfavorable operating environment. There are credible persistent threats. The likelihood of an event is high, and the potential impact to the principal is high.		Avoid travel, or take significant operational measures to mitigate exposure to extreme potential risks.
High The operational environment is volatile or rapidly changing. The environment is unfavorable; there are credible indicators and warnings and a high likelihood of an event with significant potential impact to the principal, personnel, or organization.		Travel is permissible, but proactive risk management is required.
Moderate Operational risks exist and are either likely or would have significant impact. These risks are largely known and can be anticipated.		Travel is advisable, and security teams can use proactive risk management to minimize higher risk activities or locations.
Low Permissive operating environment. There are some known risks and uncertainty, but the likelihood or impact is low.		Travel risks are low, and few operational steps are required to mitigate potential risks.
Minimal Safe operational environment where risks are clearly defined and can be easily anticipated. No likely impact to the principal, personnel, or organization.		Risk is minimal, and no mitigation steps are required.

DISCLAIMER

This service, report, deliverable, analysis, and/or assessment (collectively the “Information”) is produced and provided by Concentric Advisors. Concentric Advisors does not guarantee that all risks, threats, crime and/or corresponding premises security liability have been identified and will be completely eliminated. The Information in this document is derived from many different sources and while Concentric Advisors has taken reasonable steps to ensure that the Information is derived from reliable and reputable sources and is accurate, Concentric Advisors accepts no liability or responsibility whatsoever for any acts or omissions, done or omitted in reliance, in whole or in part, on the Information. Concentric Advisors takes no responsibility for the manner in which this information is subsequently used.

NOTICE: CONFIDENTIAL AND PROPRIETARY WORK PRODUCT

All information contained in or disclosed by this document is CONFIDENTIAL AND PROPRIETARY information owned by Concentric Advisors. By accepting this document, the recipient agrees that the document and information contained herein will be held in trust and confidence and will not be used, reproduced in whole or in part, nor its contents revealed to others except to meet the specific purpose for which it was delivered. It is understood that no right is conveyed to distribute, reproduce or have reproduced or otherwise use in any way, any of the information set forth in this document or any other item herein disclosed.

COPYRIGHT

COPYRIGHT © 2025 Concentric Advisors, Inc. All rights reserved.

This document and its contents are intended for use only by the addressed recipients of this transmission, and for the sole purpose(s) expressly approved in writing by Concentric Advisors. No part of this document may be reproduced, copied or distributed in any form or by any means, either in whole or in part, or otherwise disclosed to third parties without the express prior written consent of Concentric Advisors.

Resist Printing - Please consider the environment before printing this email.